

Taking Measurement Readings Using the Plastic Ruler and Meterstick

Reading the Plastic Ruler

- Use the plastic ruler to measure the dimension of the object as instructed.
- Continue giving the certain figures until you come to the first doubtful figure.
- When you come to the first doubtful figure, finalize the reading by giving the correct uncertainty and units.

!

2



!!

23



!! ?

23.7



!! ?

23.7 ± 0.5 mm



!

2



!!

25



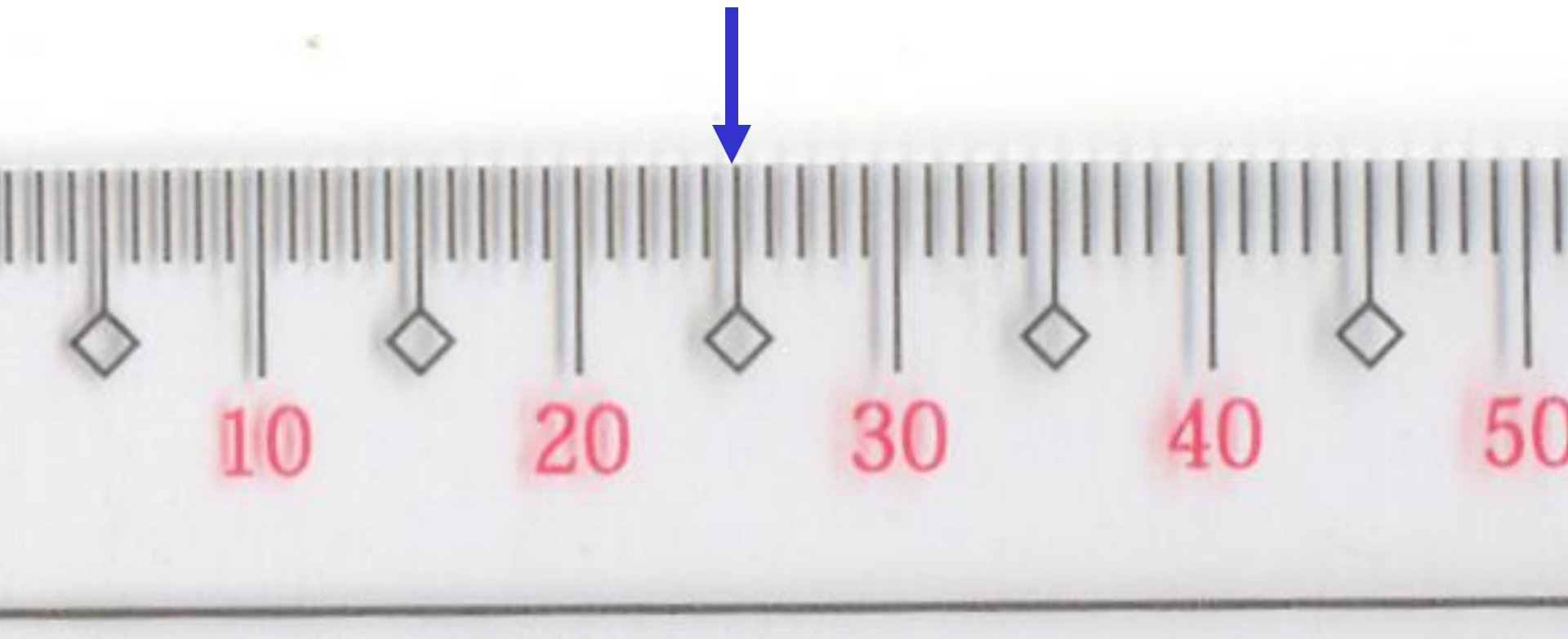
!! ?

25.0



!! ?

$25.0 \pm 0.5 \text{ mm}$



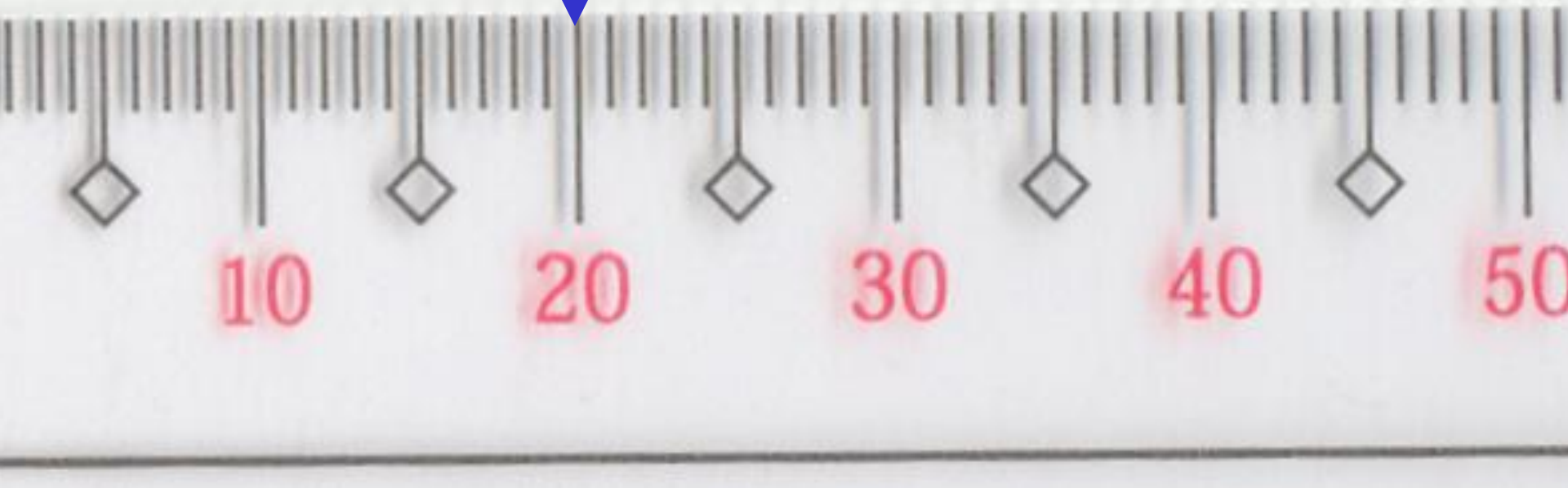
!

2



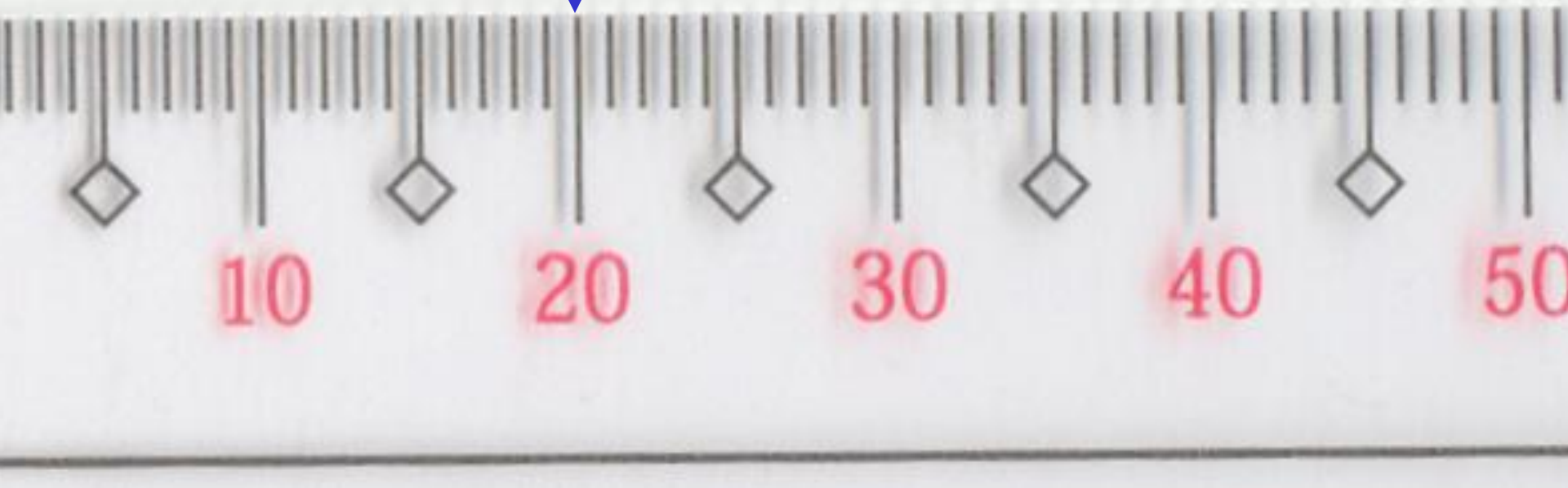
!!

20



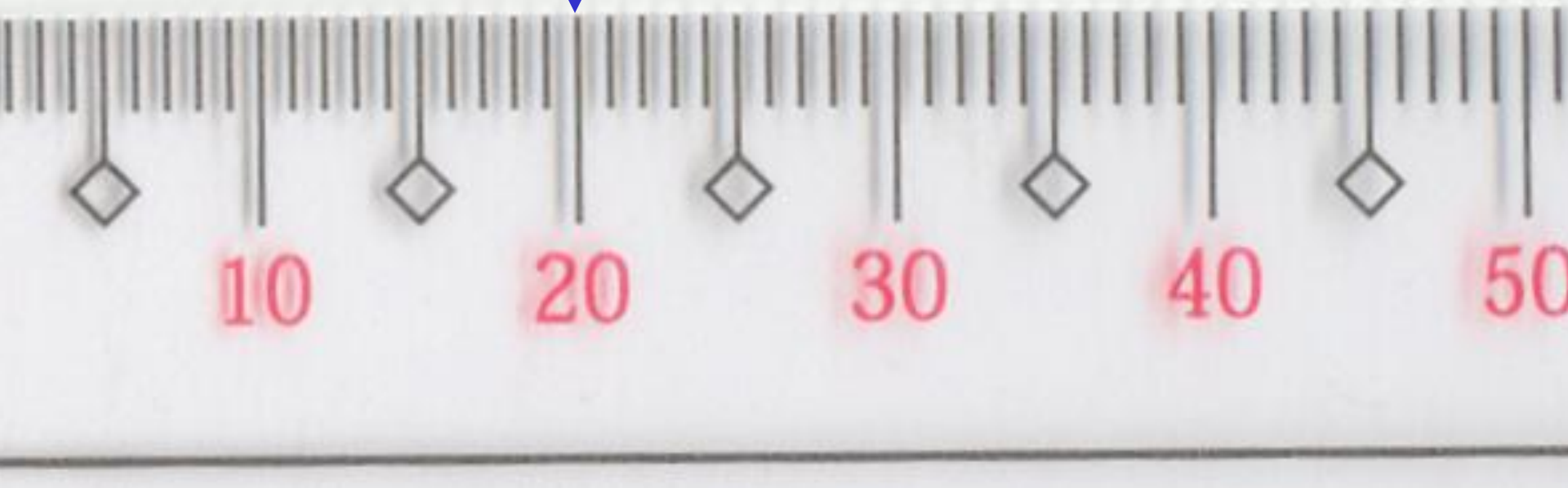
!! ?

20.0



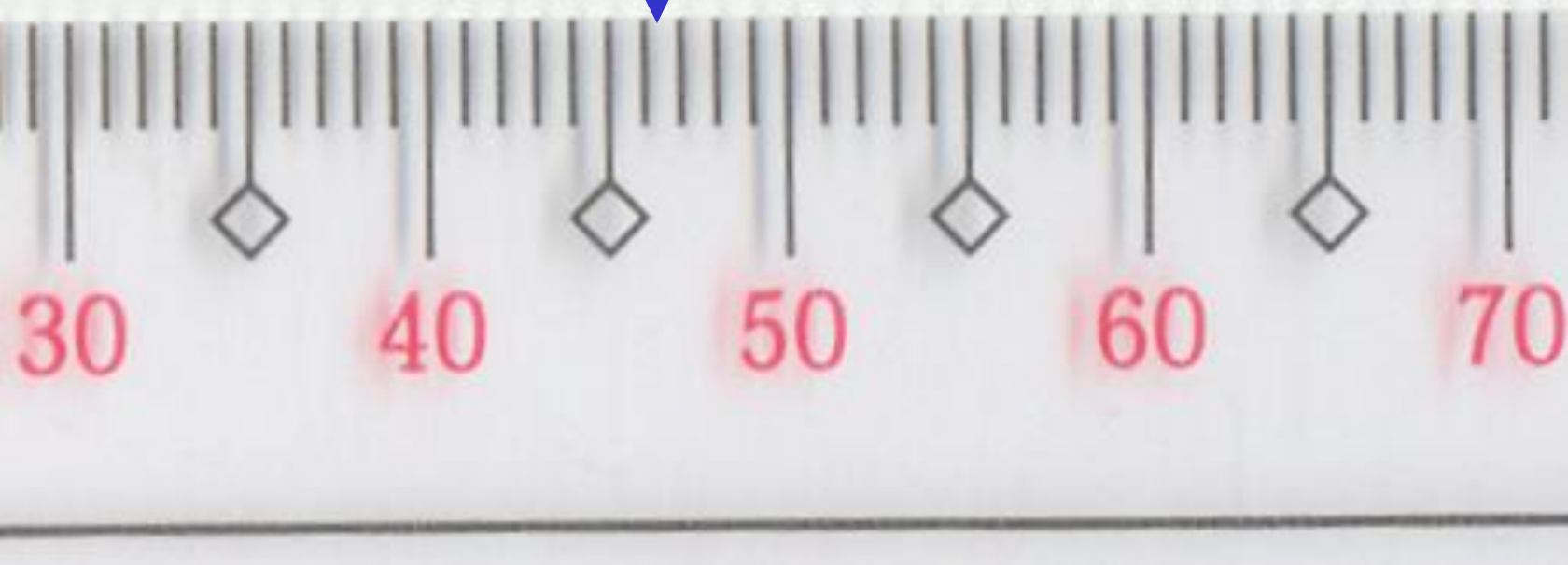
!! ?

$20.0 \pm 0.5 \text{ mm}$



!

4



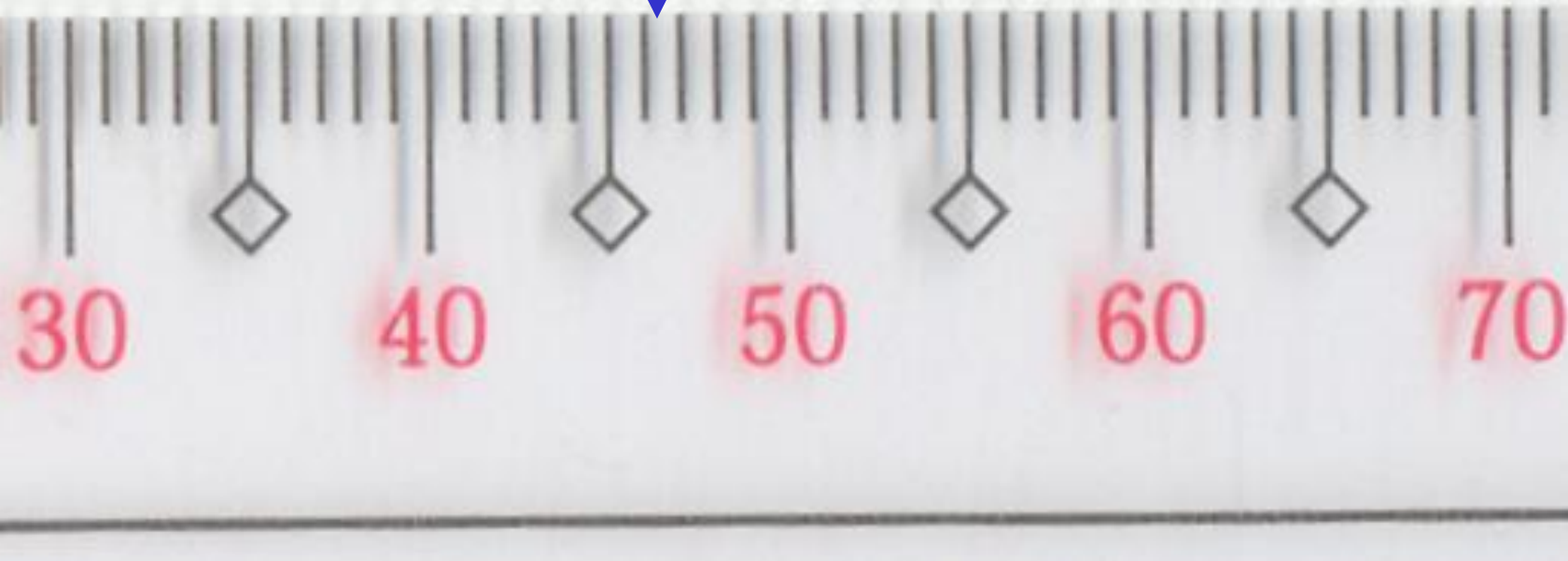
!!

46



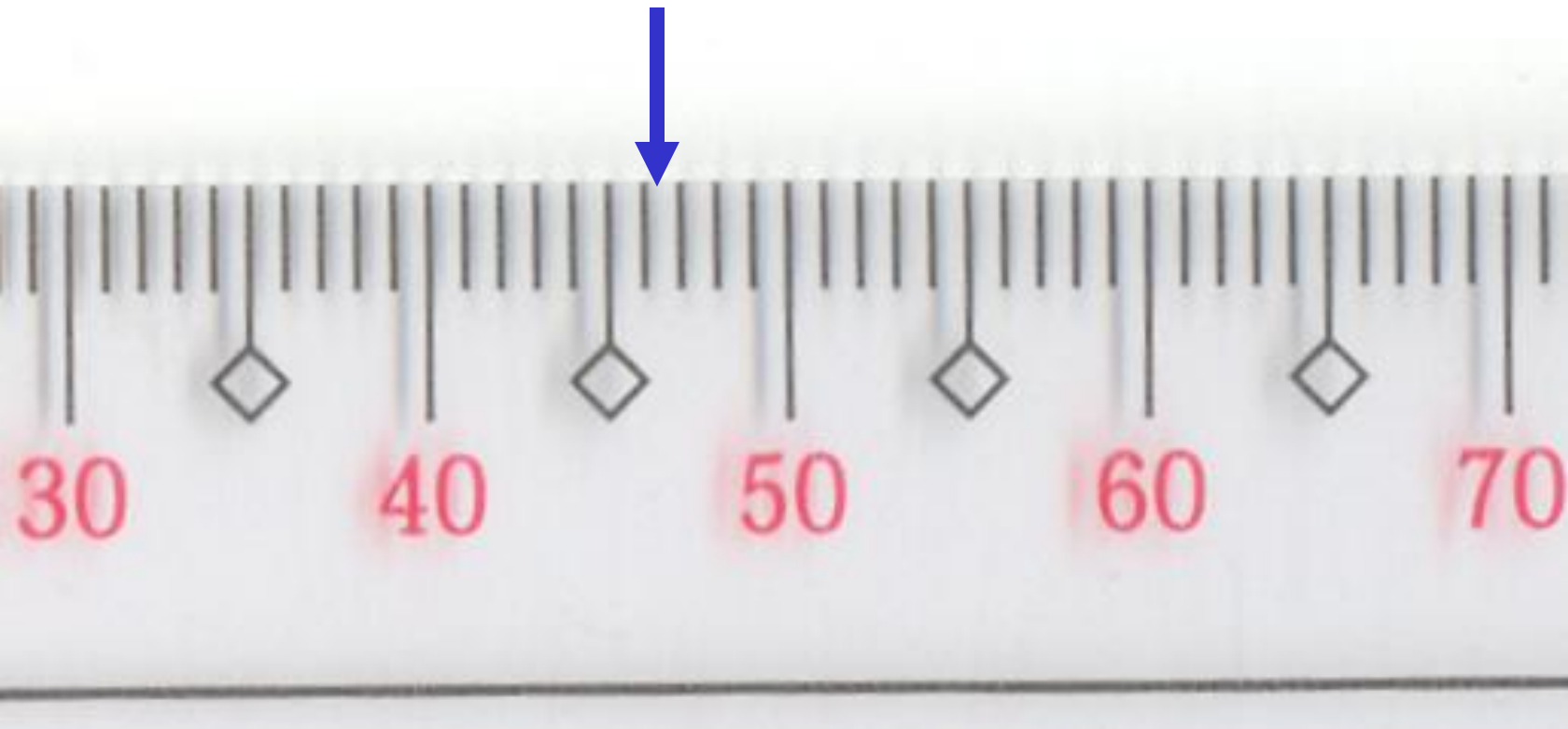
!!?

46.5



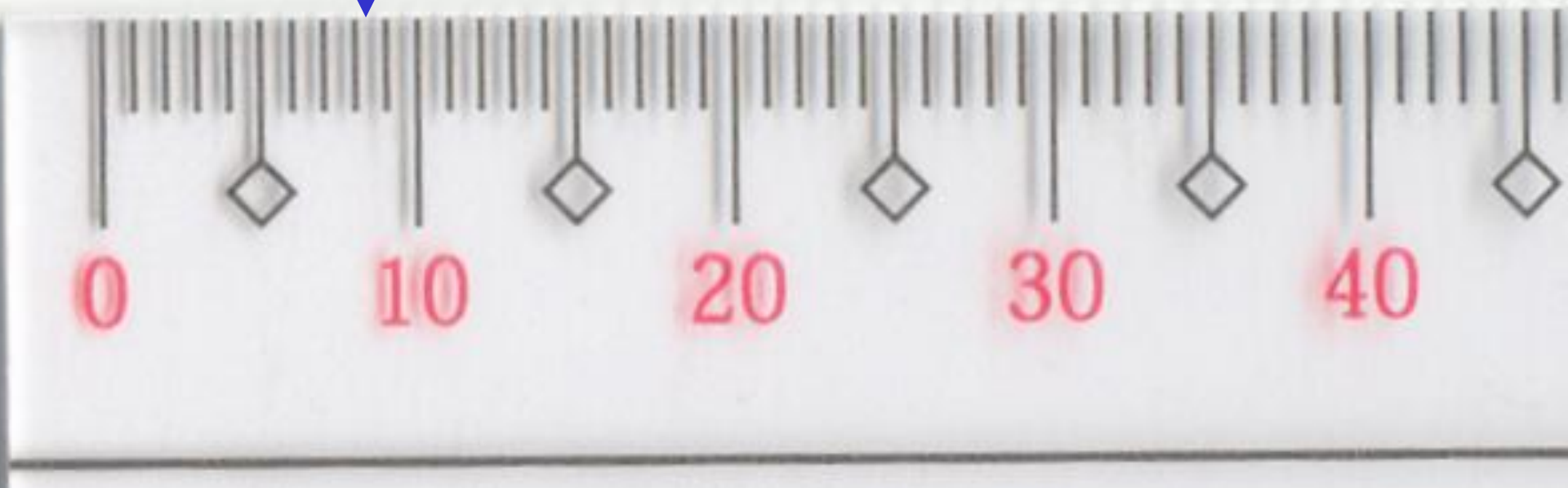
!!?

46.5 ± 0.5 mm



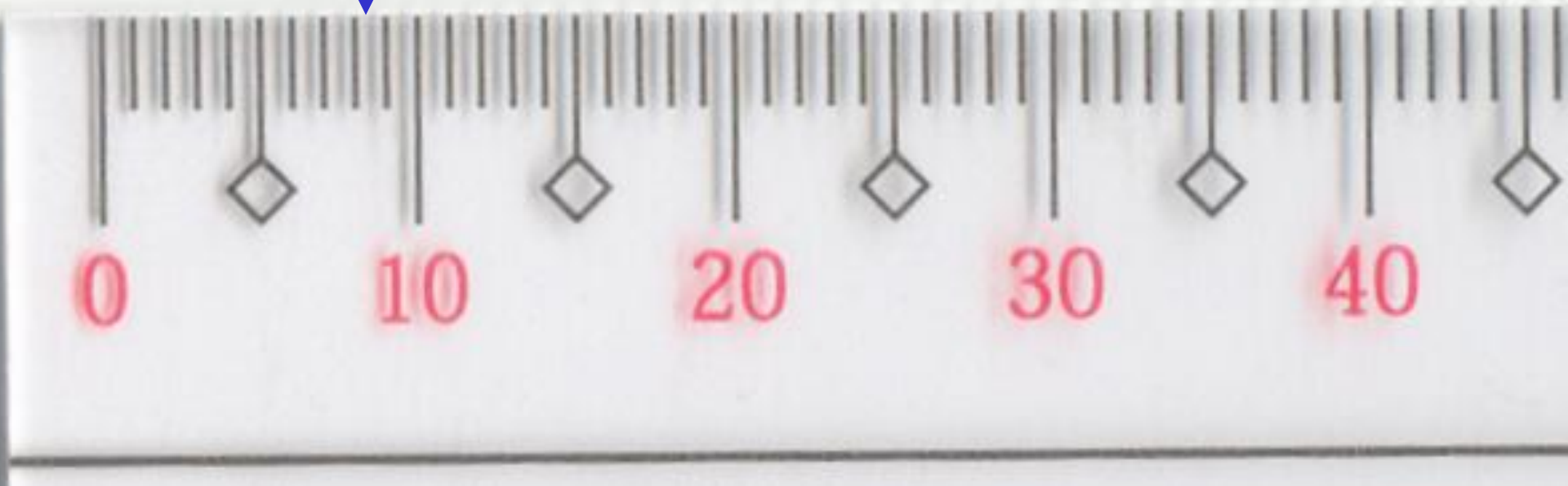
!

8



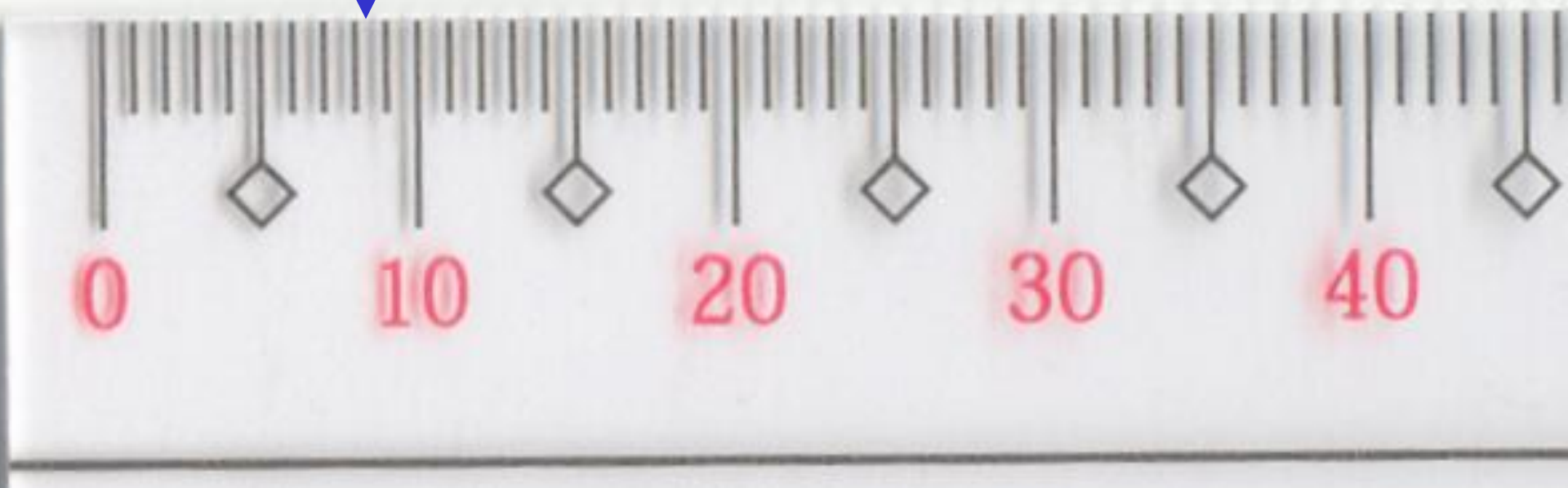
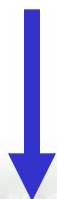
! ?

8.3



! ?

8.3 ± 0.5 mm

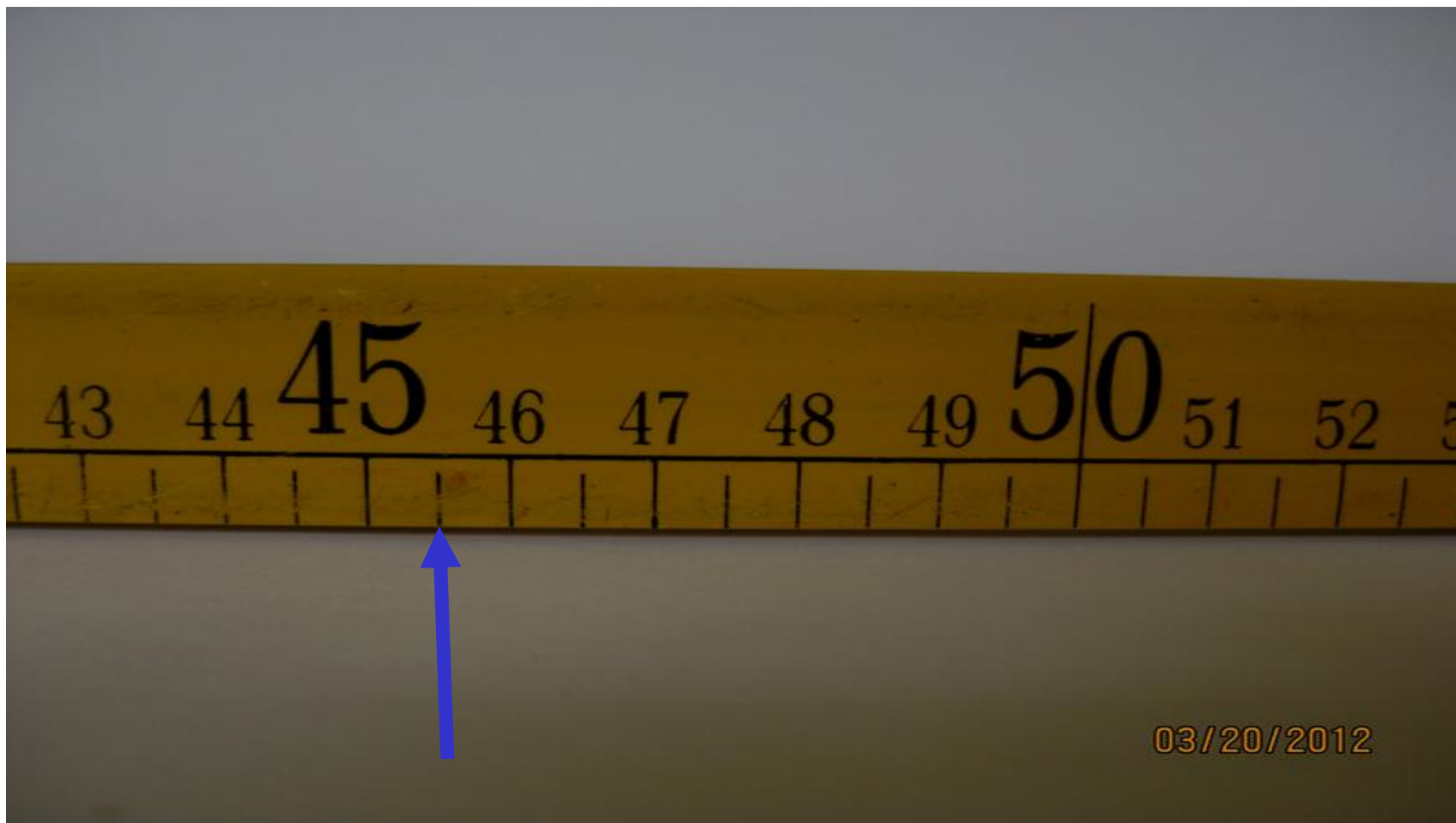


Reading the Meterstick

- Use the meterstick to measure the dimension of the object as instructed.
- Continue giving the certain figures until you come to the first doubtful figure.
- When you come to the first doubtful figure, finalize the reading by giving the correct uncertainty and units.

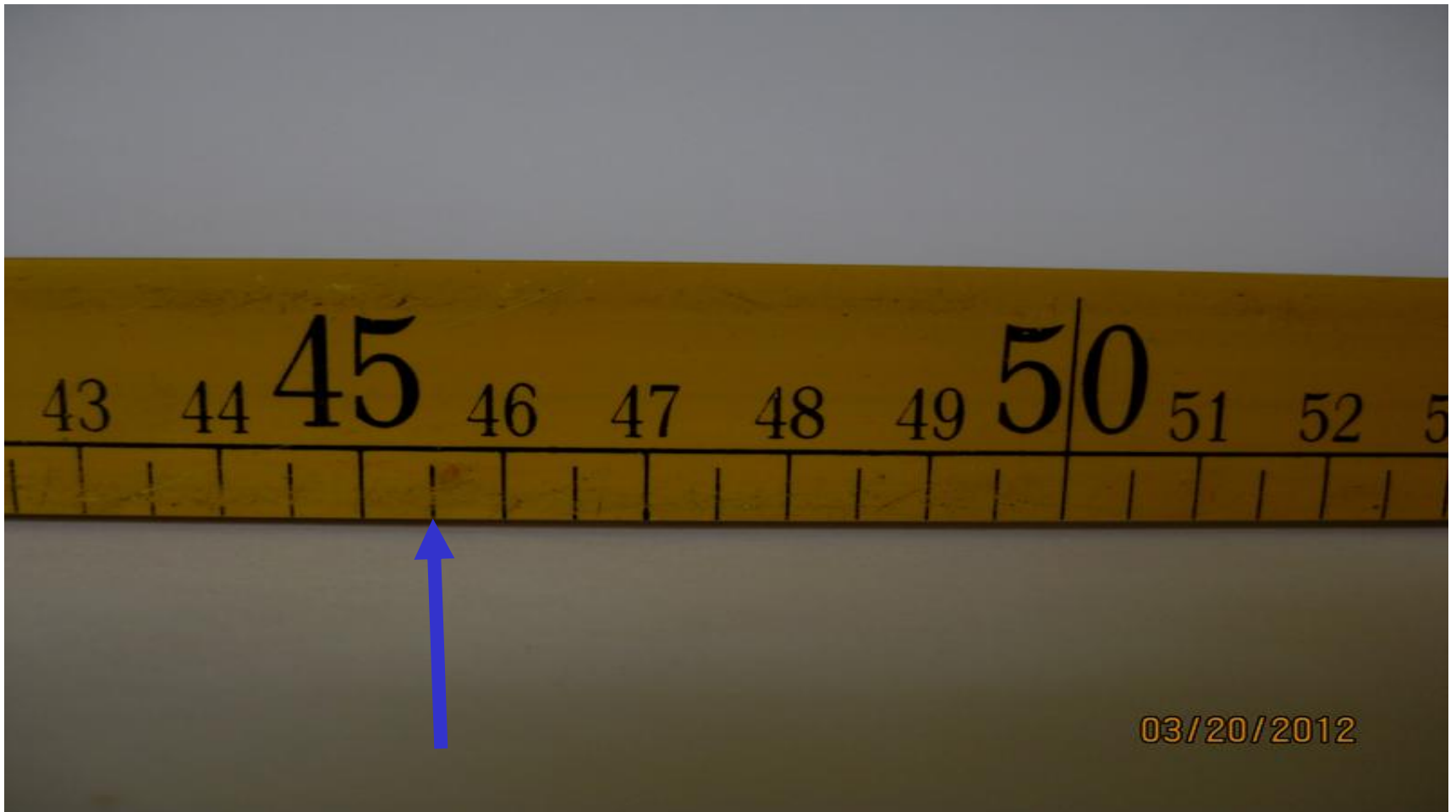
!

4



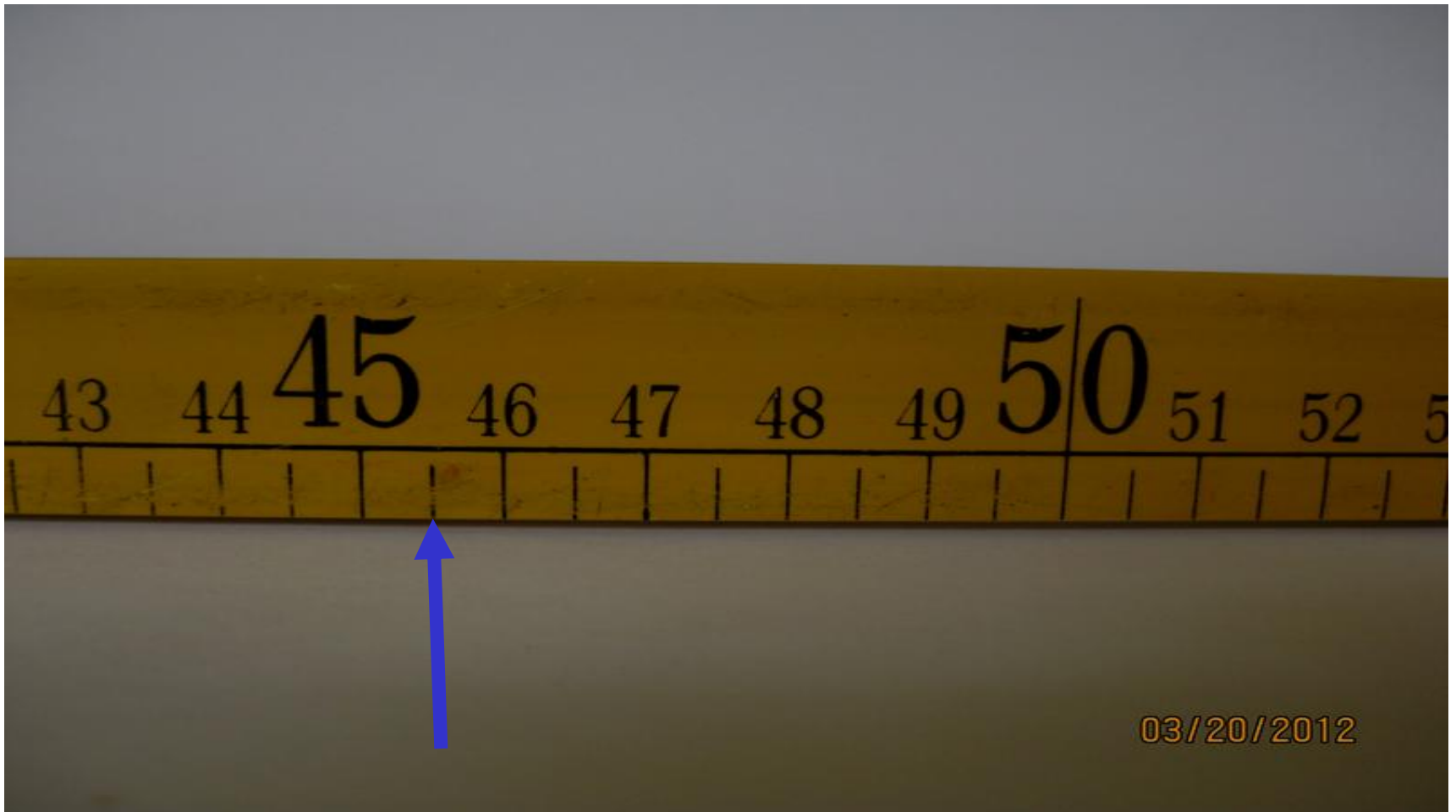
!!

45



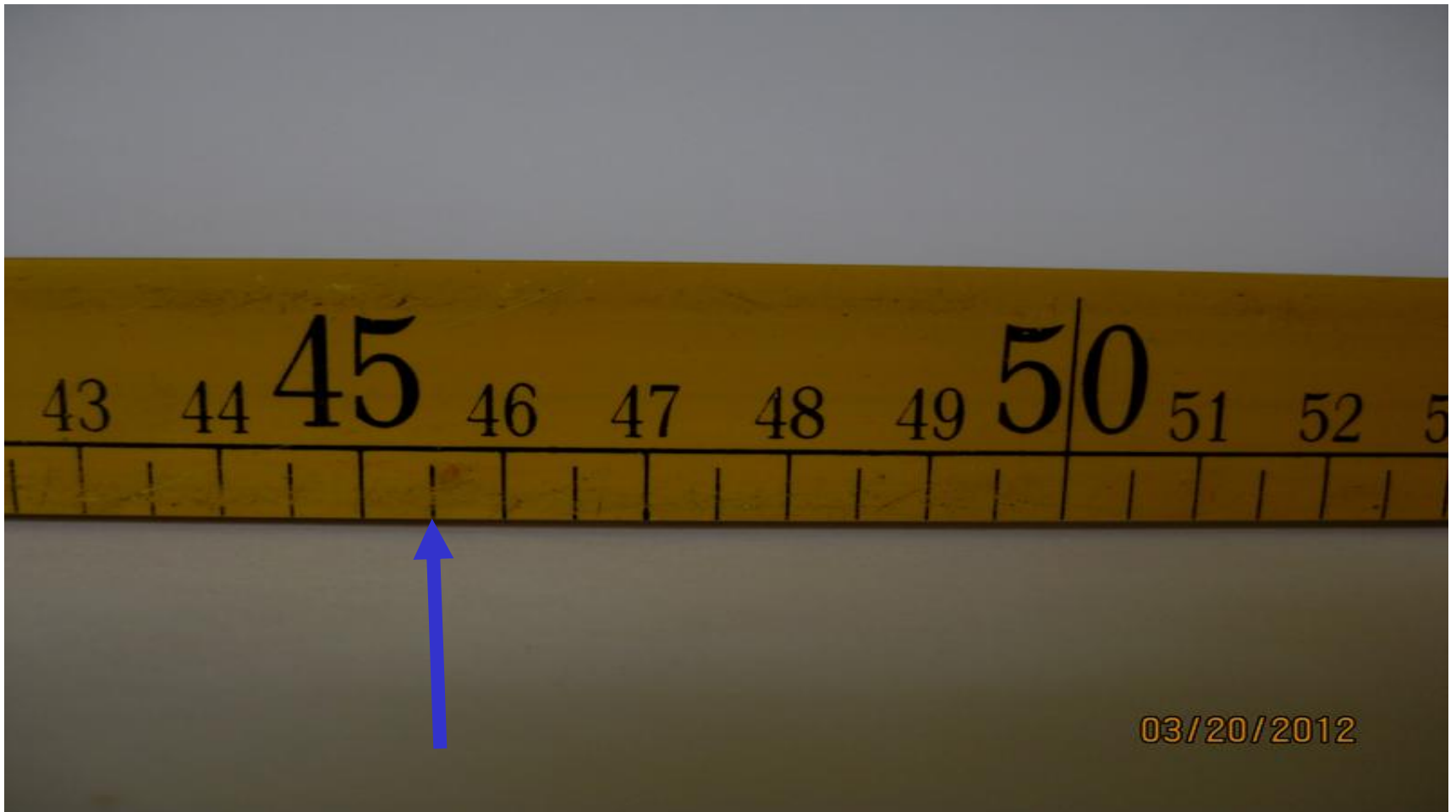
!!!

45.5



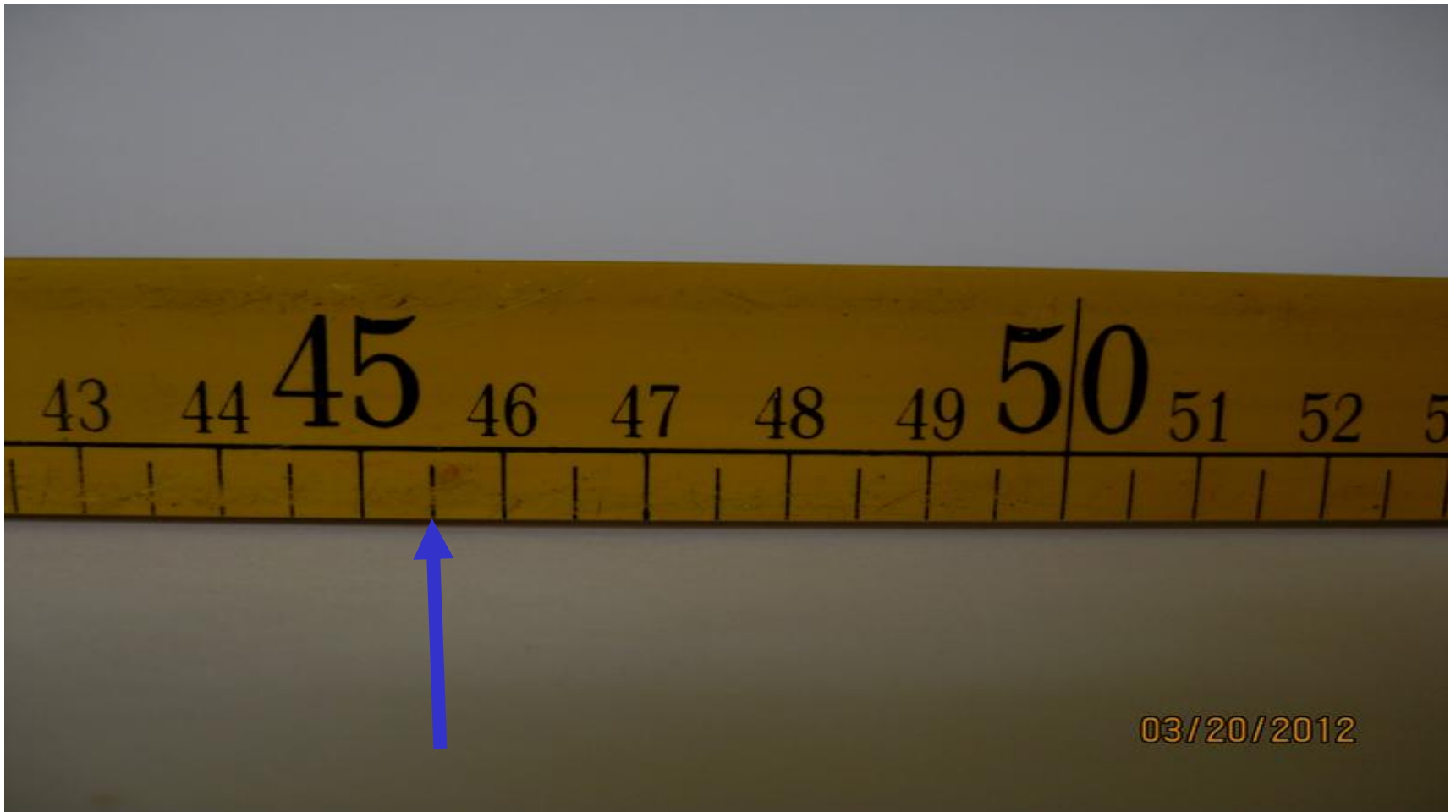
!! !?

45.50



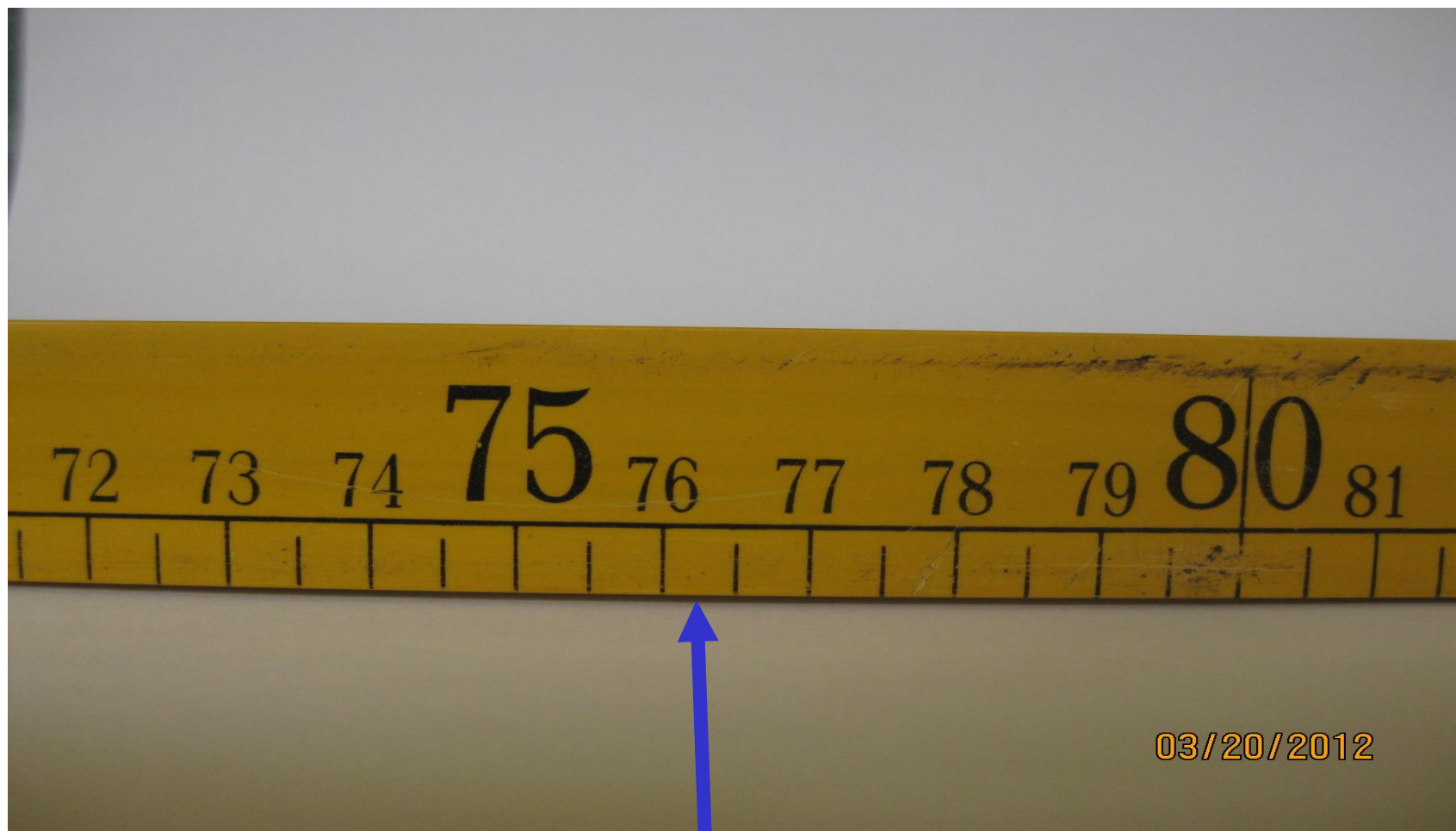
!! !?

45.50 ± 0.25 cm



!

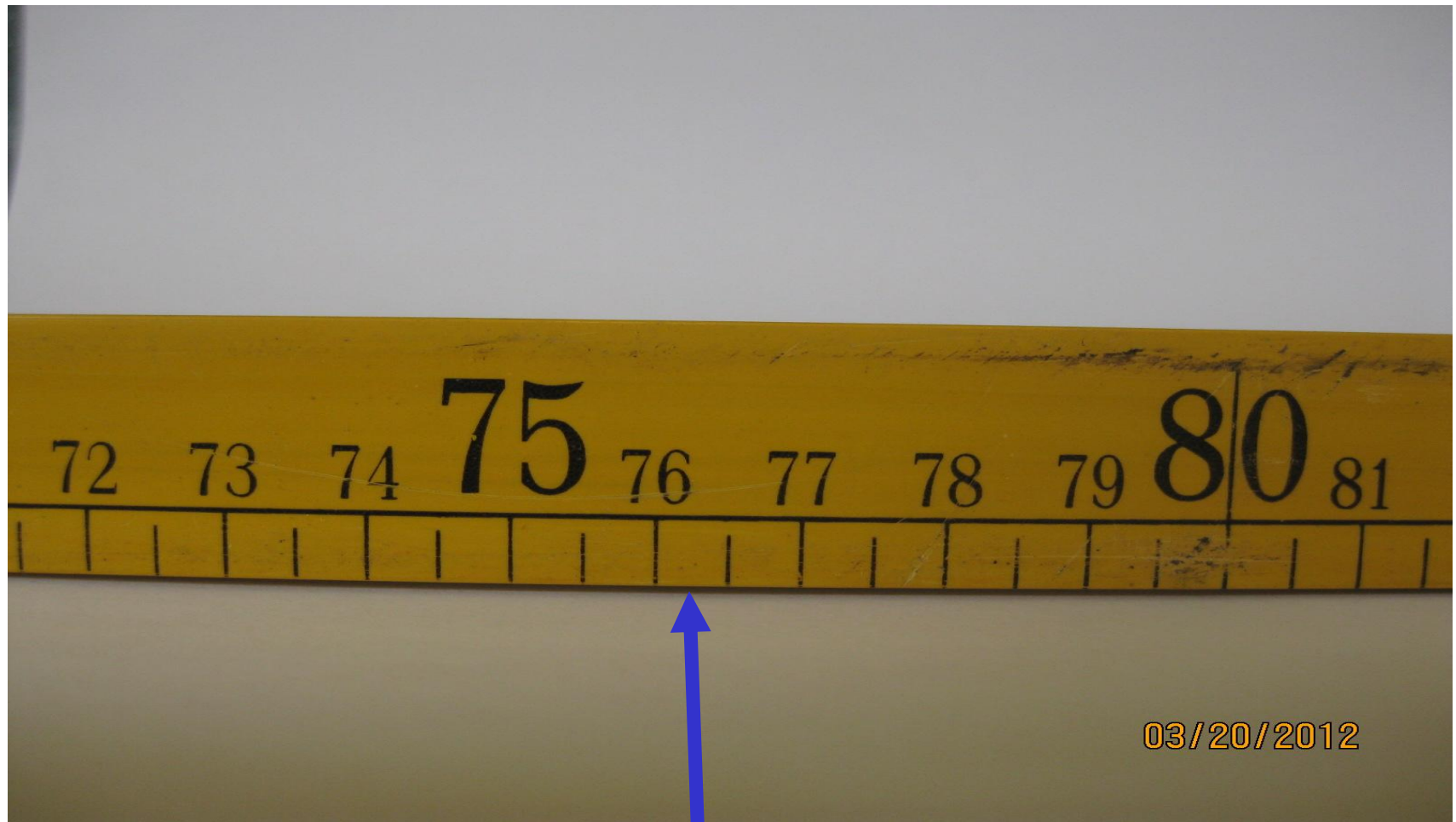
7



03/20/2012

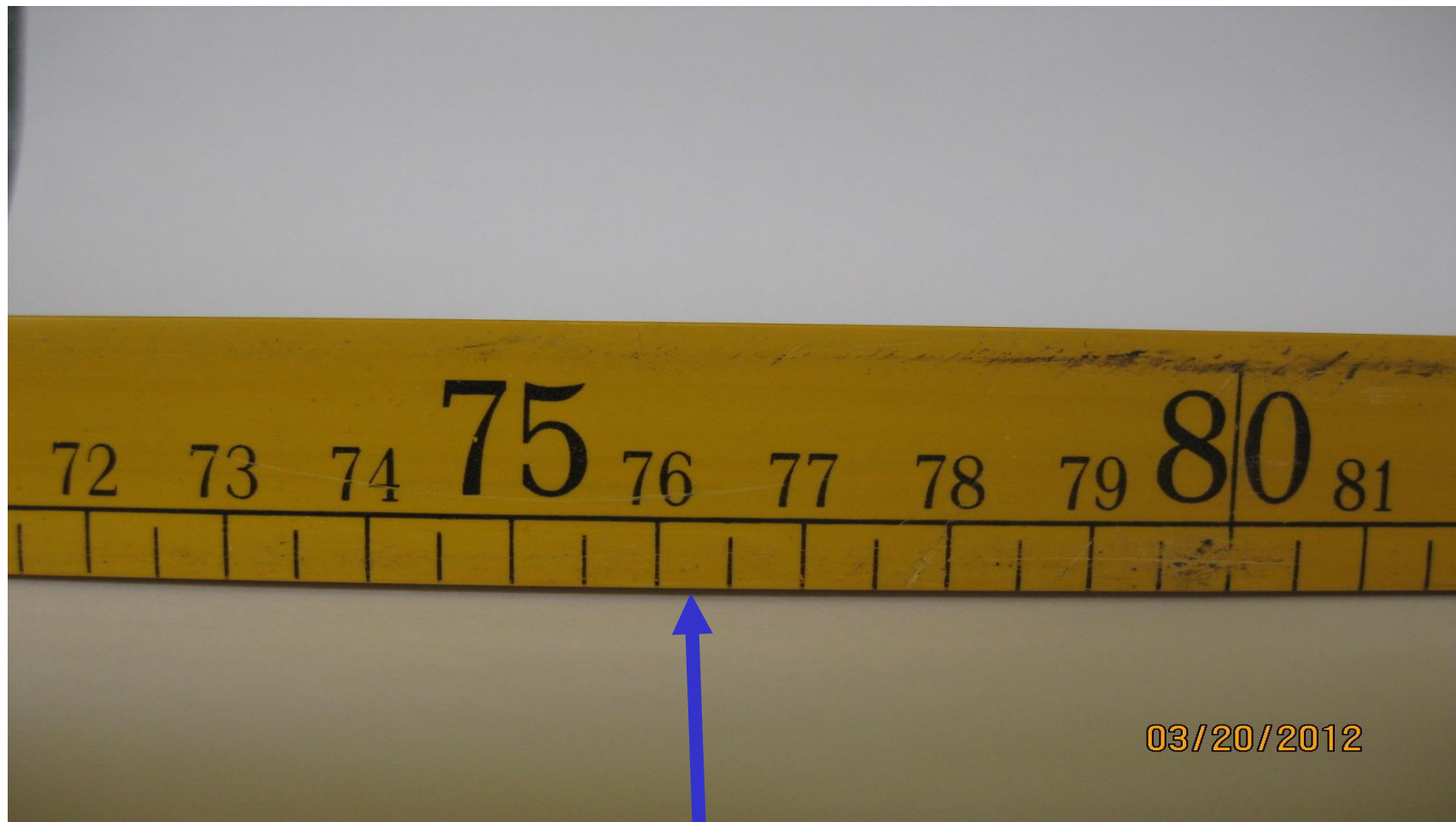
!!

76



!! ?

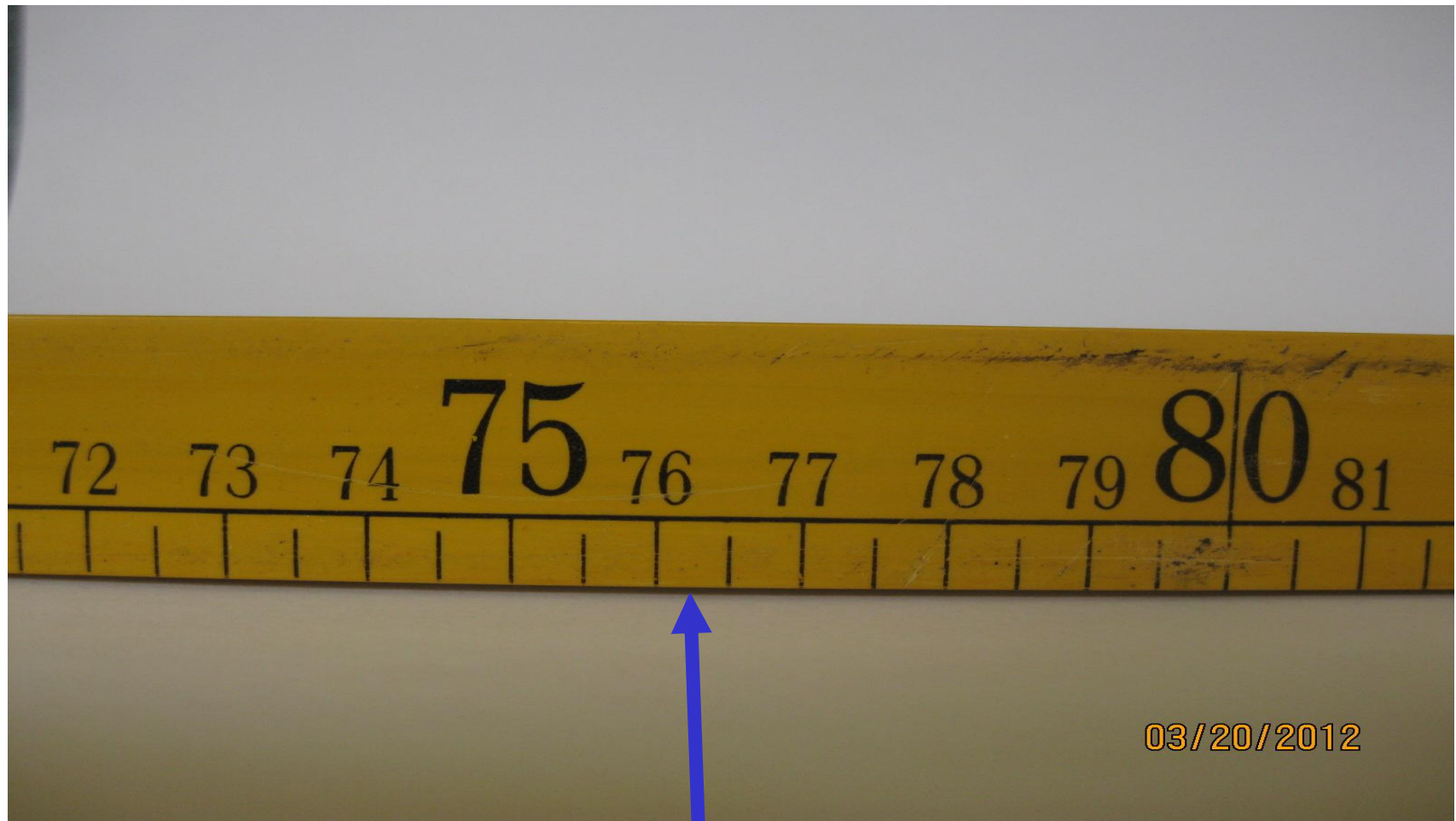
76.3



03/20/2012

!! ?

76.3 ± 0.25 cm



03/20/2012